

Westbrook Interiors
affordable interior design

PORTFOLIO

OF

COMPLETED

PROJECTS

Westbrook Interiors

affordable interior design

RECEPTION ROOM - HAY ON WYE

Before



Yellow painted walls, beige carpet, Red brick fireplace, downlit pendant lights created dark double height ceilings, exposed plastic tracks for curtains.

After



Repainted in “Jabot” Cream, New dark stained Jacobean oak flooring installed, Interlined elegant curtains on burnished copper poles installed, Two new chandelier uplighters on dimmers, New items sourced included vintage trunk and natural wool rug to add interest and soft texture, new sociable furniture plan with repositioned sofas. Red brick fireplace painted white to allow overhead beams to feature in new room design.

Westbrook Interiors

affordable interior design

COUNTRY KITCHEN - HAY ON WYE

BEFORE



Dark mahogany units and work surface stained brown, A void space had been created by Large central unit which cut the large kitchen in half, The dark beams teamed with flagstone floors, and the dark units make room feel small and low ceilinged.

AFTER



To lighten the room, all oak units painted cream, new run of bespoke base level kitchen units run along exterior wall, new bespoke island built creating new concealed storage and positioned opposite windows to take advantage of countryside views, ceiling repainted white but retaining feature beams. Kitchen units all have interesting reflective “cup” handles adding character. Worksurfaces are restrained to same shade of antique mahogany. The historic features of overhead beams and flagstone floors now shine and the room feels bigger and is a classic country kitchen with a modern feel.

Westbrook Interiors

affordable interior design

ENTRANCE HALL - HAY ON WYE

Before



Yellow painted and embossed papered walls (5 layers), the wall light on chimney the only source, Beige carpet, flock carpeted staircase.

After



The walls of room stripped, lined and painted Jabot cream, new Jacobean style oak flooring installed, Staircase resanded. Overhead chandelier and floorlamp installed. Contemporary new bespoke roman blind and door curtain installed, which echo the lines of the beams. The inside of glass fronted display cabinet repapered in vintage design.

Westbrook Interiors

affordable interior design

STUDY - HAY ON WYE

BEFORE



Grey walls, single pendant light, grey Beige carpet, two dated wall lights on chimney breast. No coherent storage.

AFTER



Walls painted Jabot white to reflect light from large window. Feature slate painted wall highlights the aubergine tones in the historic stone fireplace. New Jacobean dark stained oak floor installed. Filing storage tucked into both alcoves. Added red study desk and storage crates to add bright contrast against brown/grey. New charcoal grey blind linking to fireplace colours. New lighting plan with task, ambient and central pendant light modernised and new floor and table lamps.

Westbrook Interiors

affordable interior design

KITCHEN - LONDON

BEFORE



Small dated kitchen with large entry door and additional rarely used exterior door taking up wall space, minimal counter surfaces. Badly designed storage units.



AFTER

The old inner hallway entry door and the redundant exterior door bricked up and entry is now from existing dining room. The inner wall separating the two are knocked through to open up the space at the rear of the house, creating a new open plan kitchen/dining/music zone. Hidden ceiling rsj installed where retaining walls taken out. The new kitchen plan was designed to increase storage and light and counterspace. German designer "Rational" cream gloss kitchen with base units, eye level units and an island installed with integrated fridge/freezer, washing machine and dishwasher. Integrated pantry slide out storage and undercounter rotary storage. New Miele halogen hob and electric oven, Franke sink and taps. Chocolate brown solid granite worksurfaces with cream "glitter" metro tiled splashback in running design to add interest and texture. "Porcelanosa" cream oversized floor tiles with small "cut to size" tiled skirting.

Westbrook Interiors

affordable interior design

DINING ROOM - LONDON

BEFORE



Previously a long thin lounge with magnolia walls, low lighting levels in middle of room, beige carpet, untidy storage

AFTER



This is now an open plan dining/kitchen/music zone with an inner wall removed to create new open space. Installed light Oak parquet flooring to same design as reception next door, new lighting plan with frosted glass wall lights and feature triple pendant. Furniture sourced includes new complimentary 20' s style oak dining setting cabinet and sideboard to be in harmony with this arts and crafts house, Repainted in cream to reflect light.

Westbrook Interiors

affordable interior design

RECEPTION ROOM - LONDON

BEFORE

(No photo available)

Envelope of space was magnolia walls, single pendant light, dark brown fireplace surround. The features of huge crittal windows, original parquet flooring and window seat with hidden storage were lost in blandness and neutrality.

AFTER



Walls painted in cream to reflect light, a cole and son feature wall installed, new custom made turquoise silk curtains insalled on a hidden track system, unique vintage silk cushions and wool rug sourced to add texture and softness against the beautiful resanded parquet wooden floors. New dimmable lighting feature installed, with floor lamp adding flexible lighting options. Fireplace painted in metallic pewter toning well with the feature wallpaper.

Westbrook Interiors

affordable interior design

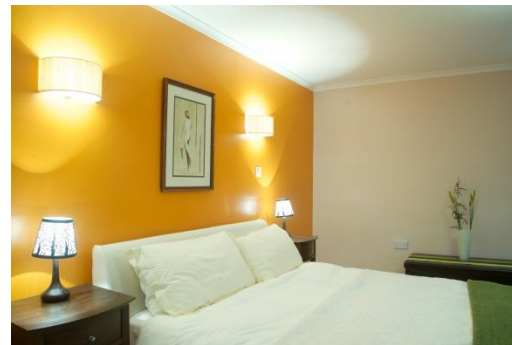
MAIN BEDROOM - GLASBURY ON WYE

BEFORE



Previously a guest and “storage” room, there were three sets of redundant fitted wardrobes filling floor and wall space, single pendant the only light source, dated décor and curtains.

AFTER



New vibrant colour scheme incorporating zesty Eastern Spice with Cappiccino Candy accent shades. New silk wall and pendant lighting - all dimmable and flexible. New slip cover for headboard with new bedside tables



New window installed to increase light, framed by new window treatments with bespoke silk curtains. New vanity table. New basin with illuminated task light in mirror.

Westbrook Interiors

affordable interior design



Newly designed bespoke wardrobe with three separate sections including cube storage, half hang and full hang space, three drawers on runners, soft close doors and pull down rails.

Other work included plastering, carpeting, coving, electrical plan, sourcing new fittings and furnishing.

Westbrook Interiors

affordable interior design

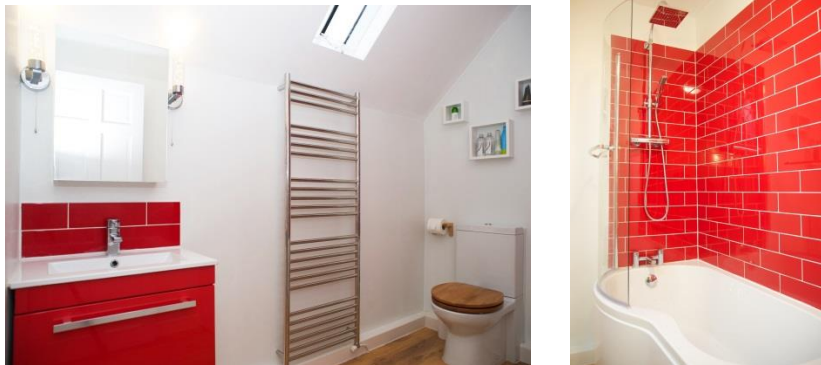
BATHROOM - HAY ON WYE

BEFORE

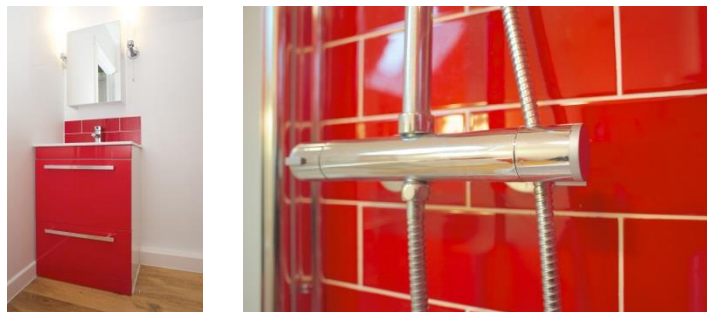


Dated Aqua colour scheme, dark mahogany and unmatched fittings, lack of coherent storage, lino flooring, exposed pipework, flat fluroscnet light, large 1800 mm bath in compact room.

AFTER



Bold feature tiled shower/bath area in running design to add interest and texture against Chiffon White walls to brighten space. New shorter 1500 mm P shaped bath for showering and bathing. Separated the shower from the bath taps and added clear shower screen incorporating towel hang handle. New compact wc.



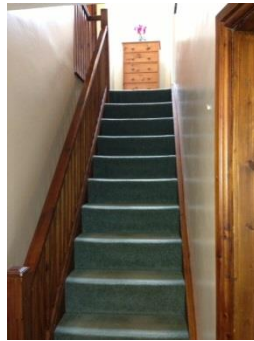
New mutli functional basin with integrated floor mounted cabinet with storage drawers, mirrored cabinet with inner shelving, new slimline wc. Lighting incorporates two task wall lights in "bubble" design and overhead dome light. New bathroom designed wood flooring.

Westbrook Interiors

affordable interior design

HALLWAY - HAY ON WYE

BEFORE



A dark uninviting entrance hall with dated carpet and dark wood.



The stair bannister removed to create extra width and new hand rail positioned on opposite side. New colour scheme incorporating leaf green walls and satin white woodwork. New hardwearing carpet installed. Cabinets and mirrors repainted

Westbrook Interiors

affordable interior design

RECEPTION - HAY ON WYE



Dated reception with old fashioned fittings, lack of effective storage and tired furnishings.

AFTER



New colour scheme incorporating clients love of red balanced with earthy mahogany and natural cream tones. New berry bespoke curtains and accent roman blinds add subtle drama to the newly light, airy double aspect space. New dark wood flooring installed. New furnishings include coffee tables/tv units, armchair all curved to create shape in the angular room. New lighting including wall and pendant lights in silk - all dimmable and flexible.



Existing bookshelf and dresser upcycled in Annie Sloane cream paints. Other works included new radiator, electrics, coving installed, new curtain poles.